



# GRP PROFILE Covers



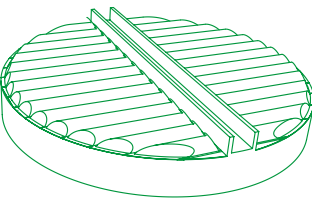
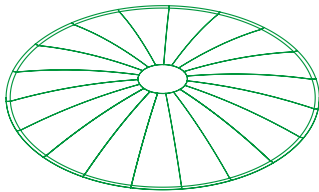


Since 1998 TECNIPUL has been dedicated to the design, manufacture and assembly of self-supporting modular covers in GRP (glass fiber reinforced polyester).



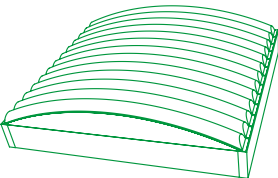
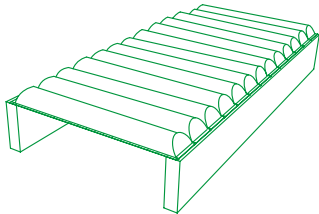
## Covers types

Dome modular cover



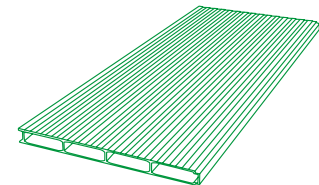
Circular cover with central support

Flat Rectangular Cover



Rectangular domed cover

Cover GRP pultrusion profiles



Our covers are characterized by having a high mechanical resistance with a low specific weight, being fast to assemble and need a minimum maintenance.

The properties of chemical resistance and corrosion resistance of the material make it particularly suitable for roofs, walkways or huts in waste water treatment plants, in the chemical industry or in coastal and marine applications.

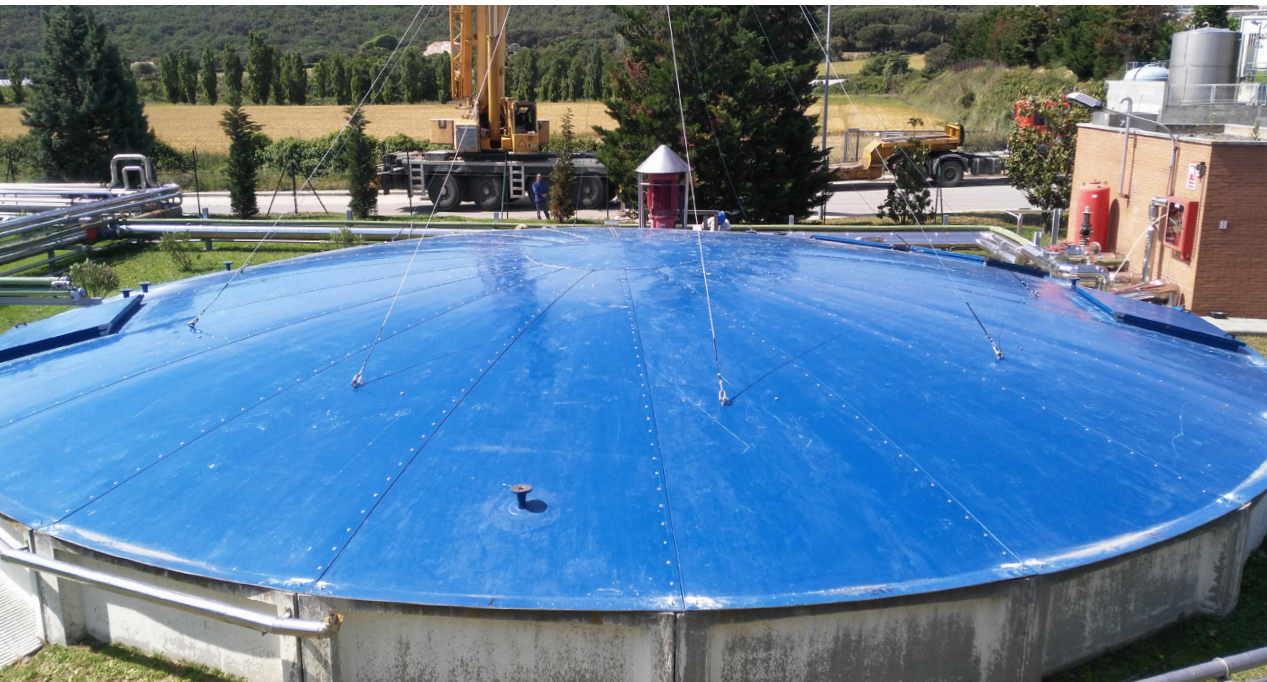
We choose the most appropriate production process (hand / spray lay up or pultrusion) depending on the distances to be covered, morphology and dimensions of the piece. Our technical team will make a customized design according to parameters required and specific to the installation, taking into account the applicable regulations.

## Dome modular cover

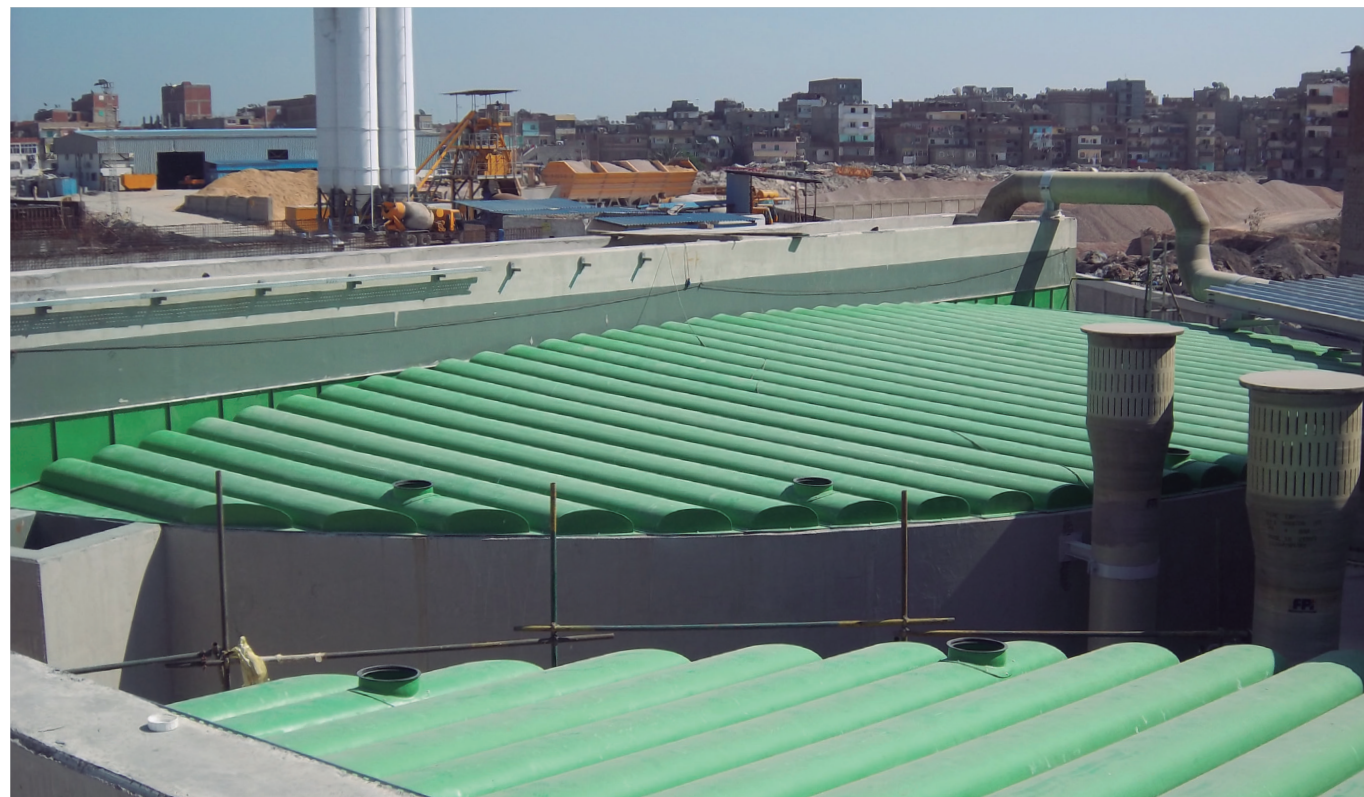
GRP cover solution suitable for a circular surface without the need for intermediate support.

The cover is formed by a central crown and pieces in sector circular form . Depending on the needs, accessories such as tubes for gases aspiration, tubs for detectors installations, gates, trap doors, etc. can be added.

In the installation of these covers all the pieces are assembled in a near surface to be transferred later the complete set to its final placement. Both the joint between pieces and the fixation in civil work is made with stainless steel screws.







## Circular cover with central support

In the case of circular section equipments, where a central beam support is available, we offer a fast mounting solution at a low cost.

This type of cover is formed by several pieces of section omega type, placed in parallel and of variable length in such a way that covers the whole surface.

The fittings and elements necessary for the correct evacuation of the gases and for the access and maintenance of the internal equipment will be placed in each case. The joint between pieces and wall fixing is made with stainless screws.



## Flat Rectangular Cover

To cover rectangular tanks or channels of a linear section with a distance between walls of up to 12 m, we recommend the format of flat rectangular cover.

The covered set consists of omega pieces that are placed in parallel.

These will have a fixed or variable length depending on the surface to be covered, thus allowing a great adaptability.

The easy assembly system allows to maintenance service workers be able to perform the placement successfully through the manufacturer's instructions.



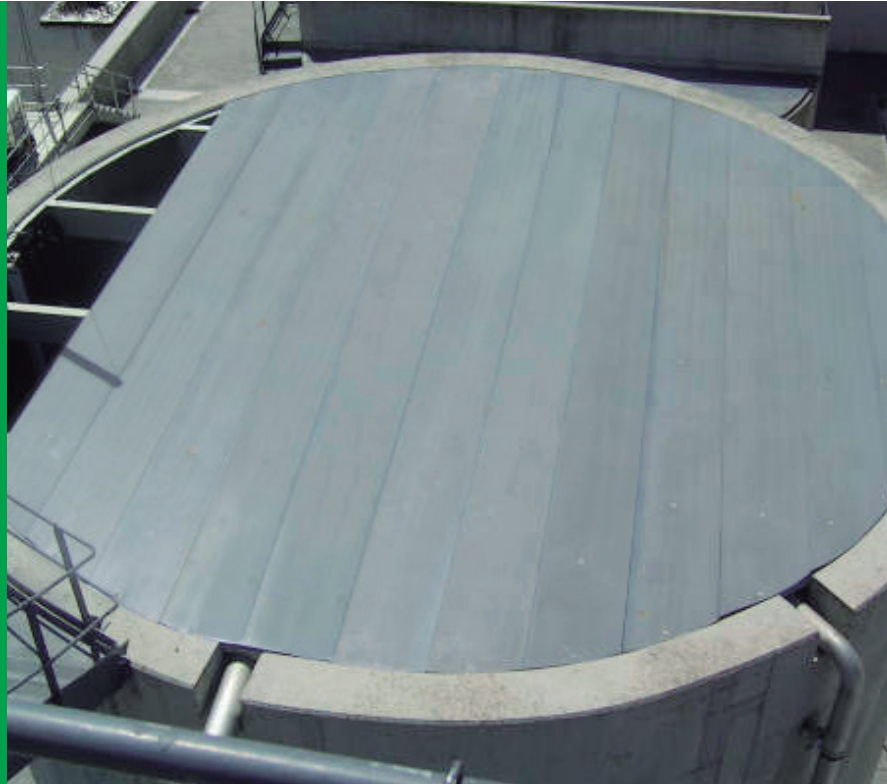


# Rectangular domed cover

Rigid cover suitable to cover rectangular and square surfaces of distances over 12m. Offering the possibility to be able to cover great distances without need of any auxiliary structure, while reducing overall weight.

The homogeneity of the pieces allows us to offer the possibility of realizing an assembly in workshop, prior to the assembly on site, saving handling costs and cranes.

Depending of the facility needs, accessories may be installed to carry out the deodorization and maintenance workers access.



# Cover GRP pultrusion profiles.

The covers made of fiberglass profiles are lightweight and allow their assembly in a simple and light structure, easy to disassemble and adjustable to any obstacle in a simple way (installations, pipes, etc.).

When a cover is designed with fiberglass board, it is possible to increase the insulation properties of the material with polyurethane filler, a very useful application for thermal and acoustical insulation. The profiles are available in rough finish, which gives the material anti-slip properties.







[www.tecnipul.com](http://www.tecnipul.com)

Ctra. de Pedrafita s/n 08281 ELS PRATS DE REI (Barcelona)  
T. +34 93 869 91 33 | [tecnipul@tecnipul.com](mailto:tecnipul@tecnipul.com)