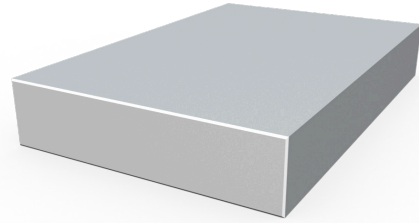
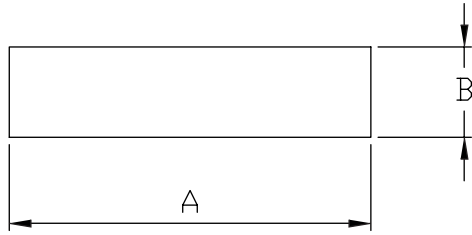




# Perfiles PRFV

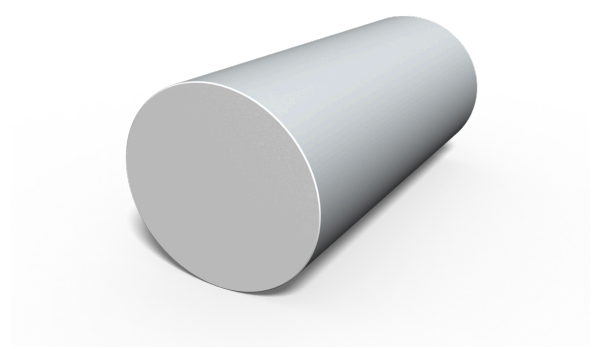
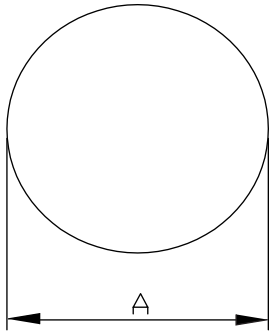




PLETINA	A	B	mm <sup>2</sup>	Kg / m
P-127	10	3	30	0,057
P-129	10	5	50	0,095
P-131	10	7	70	0,133
P-133	20	3	60	0,114
P-135	20	5	100	0,190
P-137	20	7	140	0,266
P-159	25	4	100	0,190
P-170	25	10	250	0,475
P-173	25	20	500	0,950
P-139	30	3	90	0,171
P-101	30	5	150	0,285
P-141	30	7	210	0,399
P-147	30	20	600	1,140
P-145	30	25	750	1,425
P-104	40	4	160	0,304
P-105	40	8	320	0,608
P-169	40	10	400	0,760
P-107	40	30	1200	2,280
P-111	50	5	250	0,475
P-112	50	8	400	0,760

PLETINA	A	B	mm <sup>2</sup>	Kg / m
P-113	50	10	500	0,950
P-114	50	12	600	1,140
P-164	60	4	240	0,456
P-116	60	6	360	0,684
P-178	60	8	480	0,912
P-172	60	10	600	1,140
P-177	80	5	400	0,760
P-153	80	8	640	1,216
P-154	80	10	800	1,520
P-119	100	5	500	0,950
P-149	100	8	800	1,520
P-120	100	10	1000	1,900
P-144	120	5	600	1,140
P-151	120	8	960	1,824
P-152	120	10	1200	2,280
P-122	125	5	625	1,188
P-123	150	8	1200	2,280
P-125	150	11,5	1725	3,278
P-182	160	3	480	0,912
P-183	160	6	960	1,824

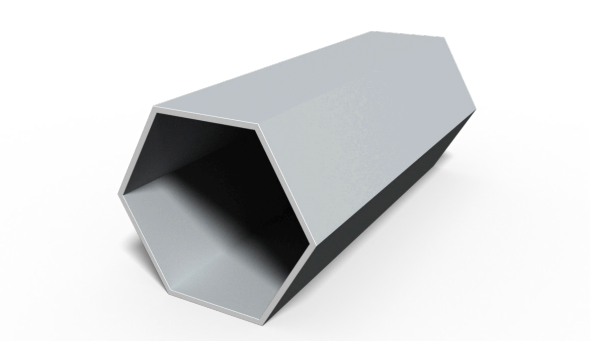
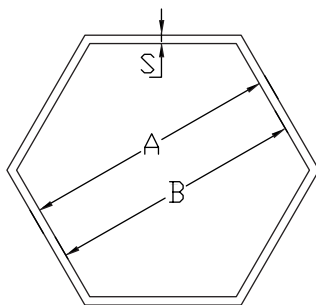
\*Posibilidad de fabricar medidas diferentes



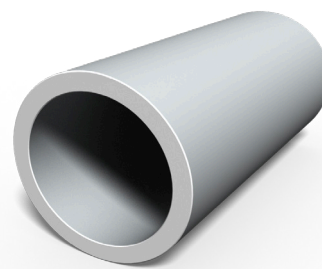
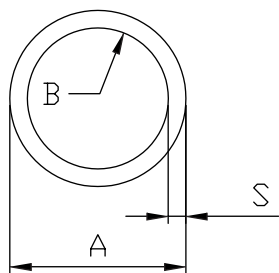
VARILLA	A	mm <sup>2</sup>	Kg /m
V-134	2	3,14	0,006
V-123	3	7,07	0,013
V-121	4	12,57	0,024
V-100	4,5	15,90	0,030
V-101	6	28,27	0,054
V-102	8	50,27	0,096
V-103	9	63,62	0,121
V-104	10	78,54	0,149
V-105	11	95,03	0,181
V-106	12	113,10	0,215
V-126	13	132,73	0,252
V-107	15	176,72	0,336

VARILLA	A	mm <sup>2</sup>	Kg /m
V-108	16	201,06	0,382
V-109	20	314,16	0,597
V-110	25	490,88	0,933
V-111	27	572,56	1,088
V-117	30	706,86	1,343
V-118	32	804,25	1,528
V-112	35	962,12	1,828
V-113	40	1256,64	2,388
V-119	45	1590,44	3,022
V-120	50	1963,50	3,731
V-138	55	2375,84	4,514
V-114	60	2827,44	5,372

\*Posibilidad de fabricar medidas diferentes



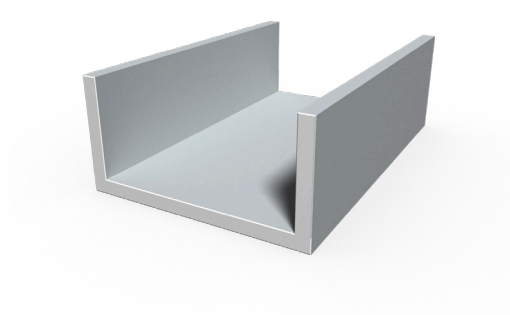
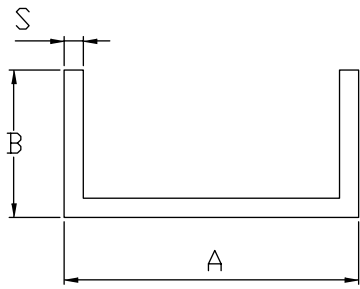
HEXAGONAL	A	B	S	mm <sup>2</sup>	Kg /m
H-100	44	30	7	897,17	1,705
H-102	65	59	3,25	693,60	1,318
H-103	96	90	3,25	1.041,62	1,979



TUBO	A	B	S	mm <sup>2</sup>	Kg / m
T-100	8	4	2	37,70	0,072
T-101	10	4	3	65,97	0,125
T-132	10	5	2,5	58,91	0,112
T-102	12	6	3	84,82	0,161
T-103	12	8	2	62,83	0,119
T-104	15	8	3,5	126,45	0,240
T-133	15	10	2,5	98,18	0,187
T-134	16	12	2	87,96	0,167
T-106	20	12	4	201,06	0,382
T-107	20	14	3	160,22	0,304
T-159	25	18	3,5	236,41	0,449
T-108	25	20	2,5	176,72	0,336
T-111	27	22	2,5	192,42	0,366
T-181	30	24	3	254,47	0,483
T-114	30	25	2,5	215,99	0,410
T-113	30	20	5	392,70	0,746
T-115	32	22	5	424,12	0,806
T-193	32	26	3	273,32	0,519
T-116	32	27	2,5	231,69	0,440
T-117	35	29	3	301,59	0,573
T-188	36	30	3	311,02	0,591
T-175	38	30	4	427,26	0,812
T-185	38,4	32	3,2	353,87	0,672
T-118	40	22	9	876,51	1,665
T-119	40	32	4	452,39	0,860
T-120	40	34	3	348,72	0,663
T-121	40	35	2,5	294,53	0,560

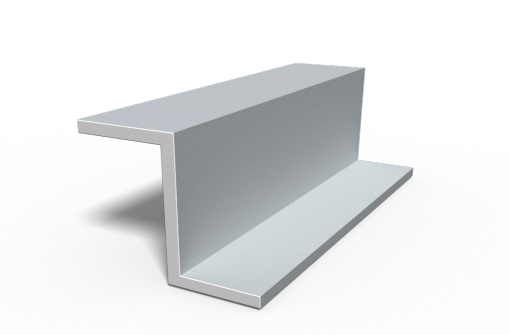
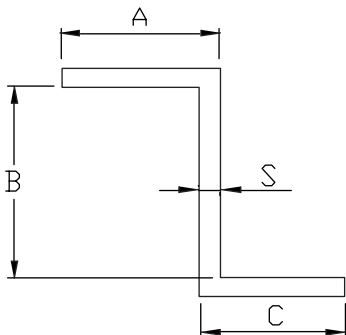
TUBO	A	B	S	mm <sup>2</sup>	Kg / m
T-122	45	35	5	628,32	1,194
T-182	45	39	3	395,84	0,752
T-187	50	30	10	1256,64	2,388
T-135	50	40	5	706,86	1,343
T-136	50	42	4	578,05	1,098
T-138	50	43	3,5	511,30	0,971
T-137	50	44	3	442,97	0,842
T-192	50	45	2,5	373,07	0,709
T-123	60	42	9	1441,99	2,740
T-125	60	50	5	863,94	1,641
T-124	60	55	2,5	451,61	0,858
T-200	70	60	5	1021,02	1,940
T-127	75	65	5	1099,56	2,089
T-126	76,2	70	3,1	711,92	1,353
T-196	80	70	5	1178,10	2,238
T-129	90	80	5	1335,18	2,537
T-189	100	80	10	2827,44	5,372
T-194	100	84	8	2312,22	4,393
T-191	100	90	5	1492,26	2,835
T-190	100	82	9	2572,97	4,889
T-186	110	85	12,5	3828,83	7,275
T-195	110	90	10	3141,60	5,969
T-128	110	100	5	1649,34	3,134
T-183	150	125	12,5	5399,63	10,259
T-130	150	140	5	2277,66	4,328
T-184	150	144	3	1385,45	2,632

\*Posibilidad de fabricar medidas diferentes

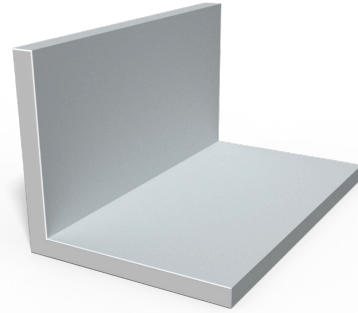
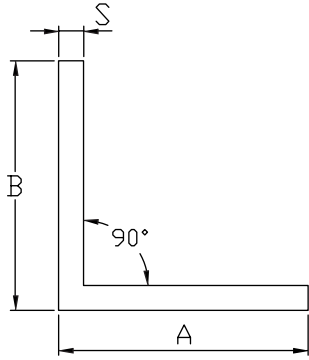


U	A	B	S	mm <sup>2</sup>	Kg /m
U-100	30	22	3	204	0,388
U-101	36	40	4	432	0,821
U-102	40	20	3	222	0,422
U-103	42	25	3	258	0,490
U-104	50	25	3	282	0,536
U-105	60	25	3	312	0,593
U-106	60	28	5	530	1,007
U-115	60	85	5	1100	2,090
U-107	68	28	3	354	0,673
U-108	76	25	3	360	0,684
U-121	80	25	3	372	0,707
U-125	90	35	8	1152	2,189

U	A	B	S	mm <sup>2</sup>	Kg /m
U-113	93	25	3	411	0,781
U-110	96	25	3	420	0,798
U-111	100	50	3	582	1,106
U-117	100	50	6,5	1215,5	2,309
U-116	100	50	8,5	1555,5	2,955
U-119	150	55	9	2178	4,138
U-122	160	60	8	2112	4,013
U-123	180	60	9	2538	4,822
U-112	200	100	5	1950	3,705
U-120	200	60	10	3000	5,700
U-118	240	72	12	4320	8,208
U-114	610	50	6	4188	7,957

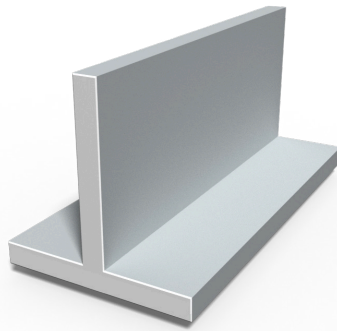
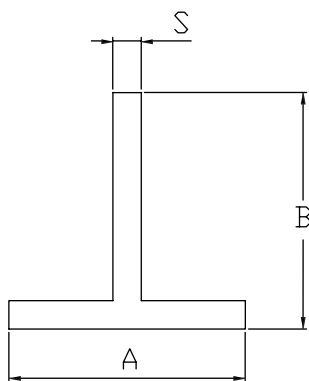


Perfil Z	A	B	C	S	mm <sup>2</sup>	Kg /m
Z-100	37	50	34	5	605	1,1495



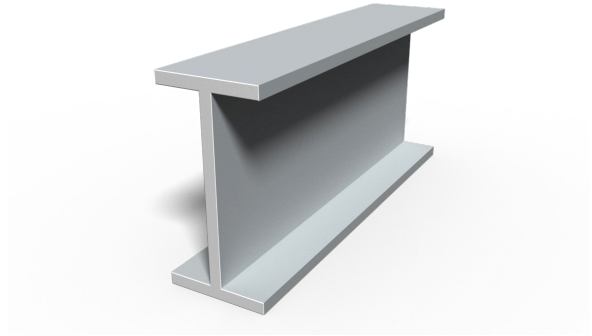
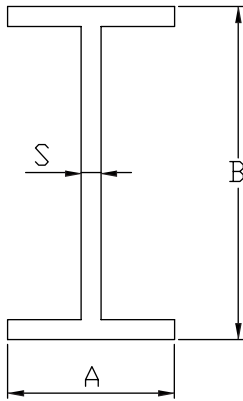
ANGULAR	A	B	$\alpha$	S	mm <sup>2</sup>	Kg /m
A-100	23	23	90°	3	129	0,245
A-101	28	28	90°	3	159	0,302
A-102	30	30	90°	3	171	0,325
A-119	40	20	90°	4	224	0,426
A-105	40	40	90°	3	231	0,439
A-104	40	36	90°	4	288	0,547
A-106	50	32	90°	3	237	0,450
A-107	50	50	90°	4	384	0,730
A-108	50	50	90°	6	564	1,072
A-109	60	60	90°	6	684	1,300
A-110	65	35	90°	5	475	0,903

ANGULAR	A	B	$\alpha$	S	mm <sup>2</sup>	Kg /m
A-117	66	66	60°	3	387	0,735
A-111	70	70	90°	7	931	1,769
A-112	75	40	90°	5	550	1,045
A-118	80	80	60°	3	471	0,895
A-122	80	80	90°	8	1216	2,310
A-113	90	90	90°	3	531	1,009
A-121	100	50	90°	6	864	1,642
A-114	100	100	90°	8	1536	2,918
A-115	100	100	90°	10	1900	3,610
A-116	103	28	90°	3	384	0,730
A-120	150	150	90°	12	3456	6,566



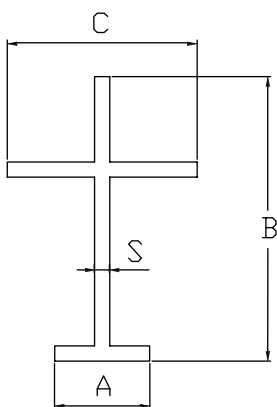
T INVERTIDA	A	B	S	mm <sup>2</sup>	Kg /m
T Inv -103	50	50	8	736	1,398
T Inv -100	74	80	3	435	0,827
T Inv -102	75	75	8	1.136	2,158

T INVERTIDA	A	B	S	mm <sup>2</sup>	Kg /m
T Inv -101	100	100	12	2.256	4,286
T Inv -104	150	150	13	3.731	7,089
T Inv -105	150	175	15	4.650	8,835

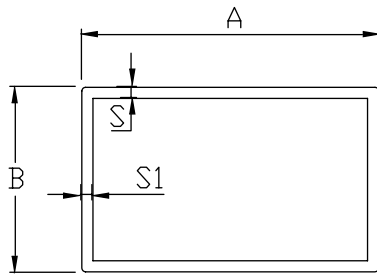


DOBLE T	A	B	S	mm <sup>2</sup>	Kg /m
TT-104	20	25	6	318	0,604
TT-101	40	45	4	468	0,889
TT-102	40	60	4	528	1,003
TT-100	42	30	3	324	0,616
TT-105	42	60	3	414	0,787
TT-103	50	100	8	1.472	2,797

DOBLE T	A	B	S	mm <sup>2</sup>	Kg /m
TT-107	58,6	60	3,5	596	1,132
TT-113	60	120	8	1.792	3,405
TT-109	75	150	8	2.272	4,317
TT-108	100	200	12	4.512	8,573
TT-111	150	300	13	7.462	14,178
TT-112	150	350	15	9.300	17,670

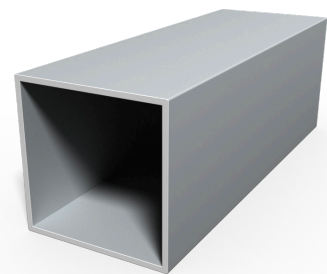
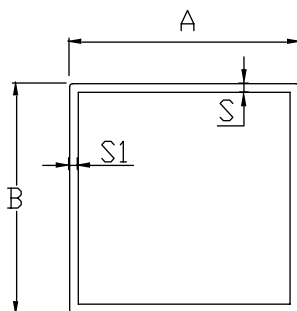


IPN LAMELAS	A	B	C	S	mm <sup>2</sup>	Kg /m
IPN-100	50	150	100	8	2272	4,317



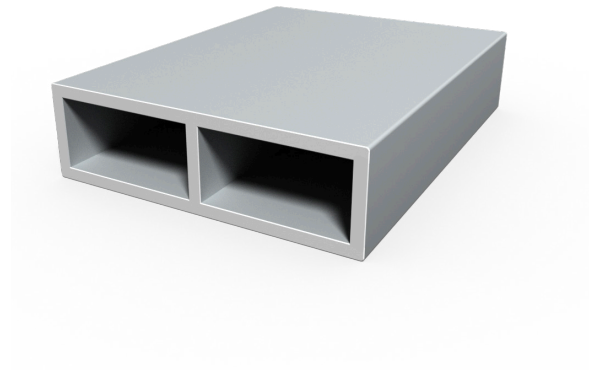
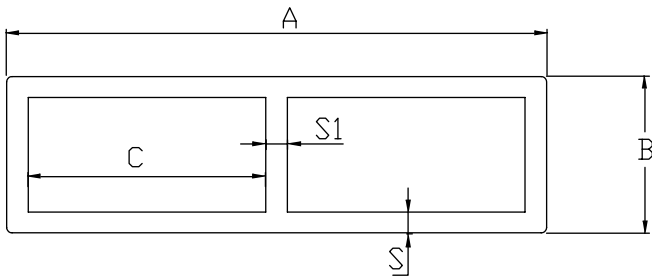
RECTANGULAR	A	B	S1	S	mm <sup>2</sup>	Kg /m
R-100	25	20	2,5	2,5	200,00	0,380
R-101	30	12,5	2,5	2,5	187,50	0,356
R-110	30	25	3	3	294,00	0,559
R-103	30	27	2,5	2,5	260,00	0,494
R-102	30	20	3	3	264,00	0,502
R-121	38	26	3	3	348,00	0,661
R-106	40	30	3,5	3,5	441,00	0,838
R-128	50	20	3	3	384,00	0,730
R-108	56	36	3	3	516,00	0,980
R-113	70	26	3	3	540,00	1,026

RECTANGULAR	A	B	S1	S	mm <sup>2</sup>	Kg /m
R-109	70	50	4	4	896,00	1,702
R-130	73	25	3	3	552,00	1,049
R-126	75	20	3,5	3,5	616,00	1,170
R-123	75	50	3,5	3,5	826,00	1,569
R-115	80	50	3	3	744,00	1,414
R-116	82	32	3	3	648,00	1,231
R-118	85	75	5	5	1.500,00	2,850
R-117	85	65	6	6	1.656,00	3,146
R-111	100	50	4	4	1.136,00	2,158
R-127	160	70	3,5	3,5	1.561,00	2,966

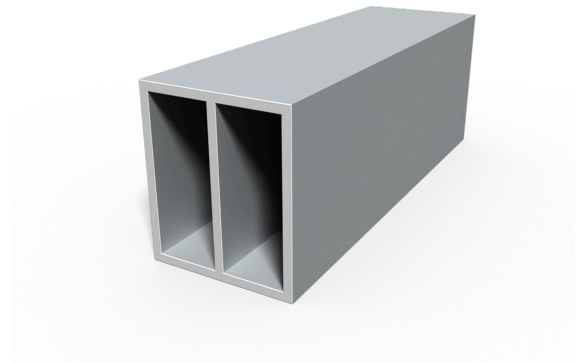
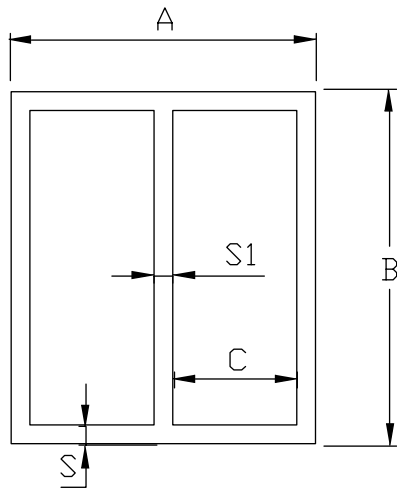


CUADRADO	A	B	S1	S	mm <sup>2</sup>	Kg /m
R-104	36,5	36,5	3	3	402,00	0,764
R-132	40	40	5,25	5,25	729,75	1,387
R-107	50	50	3,5	3,5	651,00	1,237
R-125	50	50	5	5	900,00	1,710
R-124	80	80	8	8	2.304,00	4,378

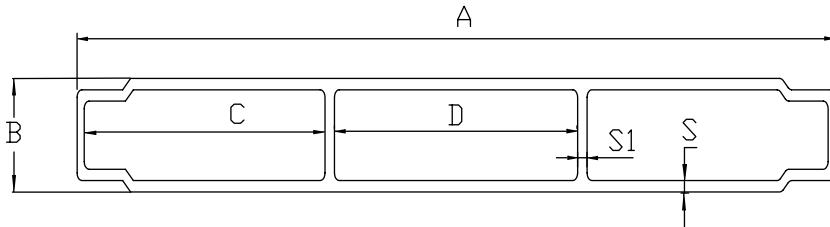
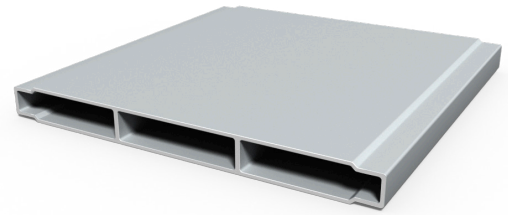




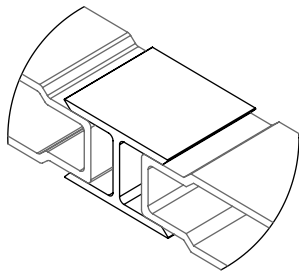
TABLÓN	A	B	C	S1	S	mm <sup>2</sup>	Kg /m
TBL-106	100	30	44	4	4	1.063,14	2,020
TBL-105	150	30	69,5	3	4	1.302,14	2,474



RECT NERVIO	A	B	C	S1	S	mm <sup>2</sup>	Kg /m
R-122	75	65	31	4	4	1.284	2,440
R-123	75	50	52	3,5	3,5	976,50	1,855

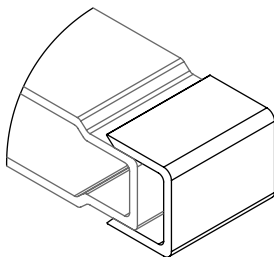


TABLÓN	A	B	C	D	S1	S	mm <sup>2</sup>	Kg /m
TBL-100	319	30	103	99	4	3	2.234,66	4,246
TBL-101	319	60	98,5	99	6	5,5	4.598,74	8,738



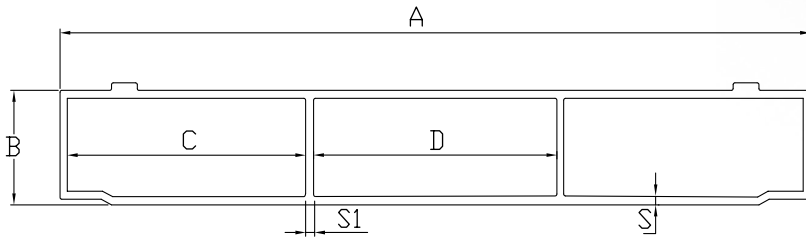
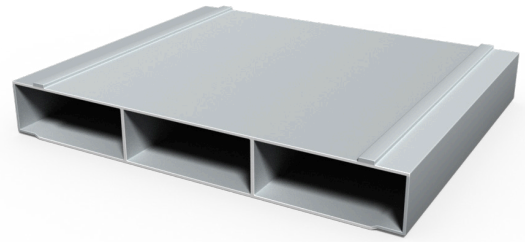
#### UNIONES DE TABLÓN TBL 100/101

DOBLE T	A	B	C	mm <sup>2</sup>	Kg /m
TT-100	42	30	3	324	0,616
TT-105	42	60	3	414	0,787

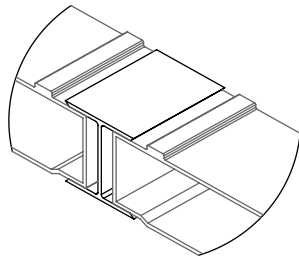


#### UNIONES DE TABLÓN TBL 100/101

U EXTREMOS	A	B	C	mm <sup>2</sup>	Kg /m
U-100	30	22	3	204	0,388
U-105	60	25	3	312	0,593

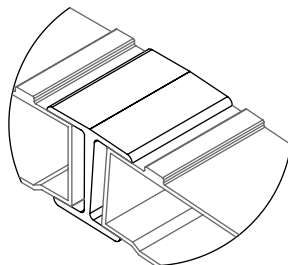


TABLÓN	A	B	C	D	S1	S	mm <sup>2</sup>	Kg /m
TBL-102	437	60	141	141	4	3 / 3,5	3.635,74	6,908



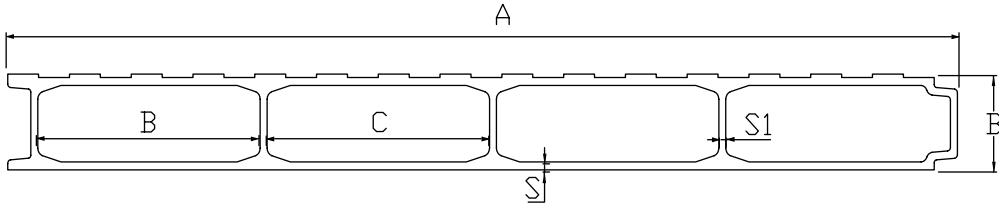
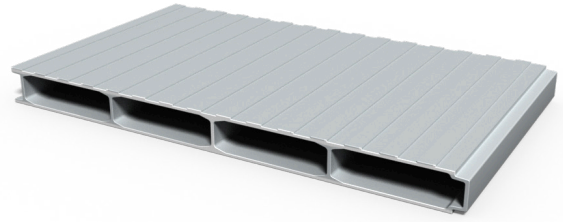
### UNIONES DE TABLÓN TBL 102

DOBLE T	A	B	C	mm <sup>2</sup>	Kg /m
TT-107	58,6	60	3,5	596	1,132

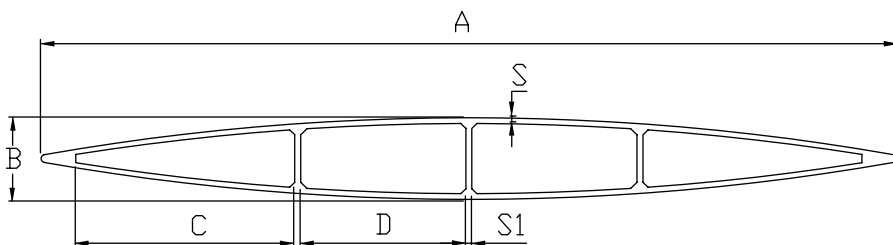
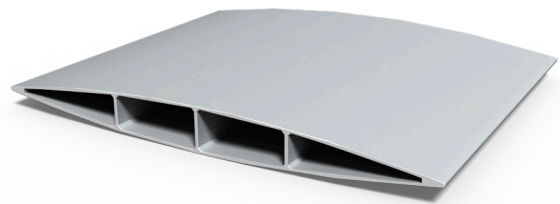


### UNIONES DE TABLÓN TBL 102

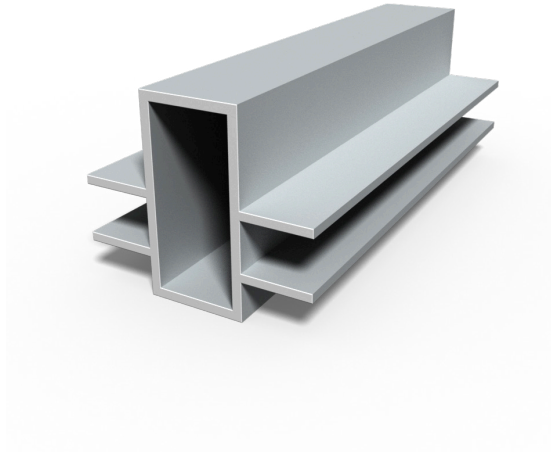
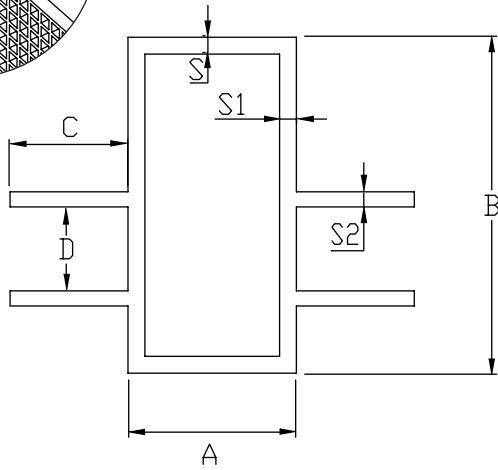
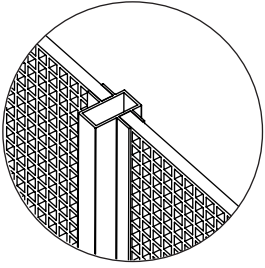
DOBLE T INCLINADA	A	B	C	mm <sup>2</sup>	Kg /m
TT-106	58,4	60	3,5	825,76	1569



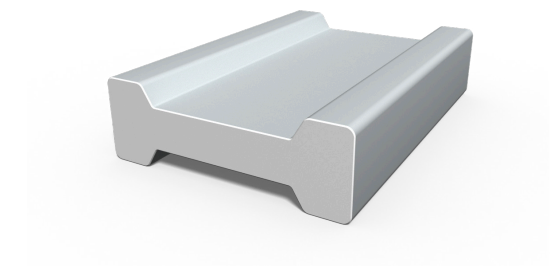
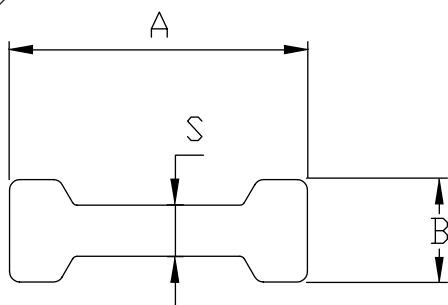
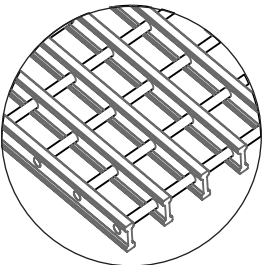
TABLÓN	A	B	C	D	S1	S	mm <sup>2</sup>	Kg /m
TBL-103	600	47	144	144	4,5	4	6.283,03	11,938



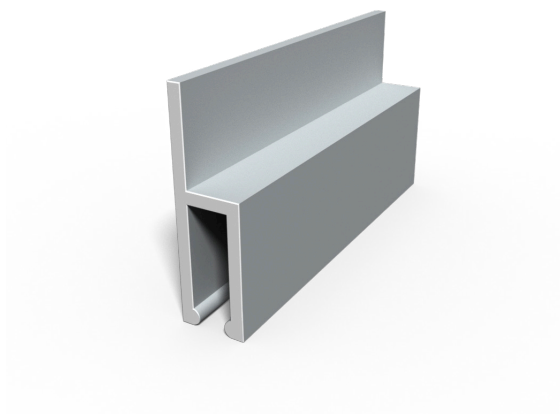
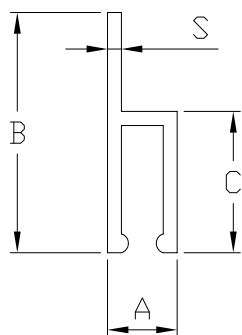
ELIPSE	A	B	C	D	S1	S	mm <sup>2</sup>	Kg /m
E-2200	500	50	128	96,5	3,5	3,5	3.890,84	7,393



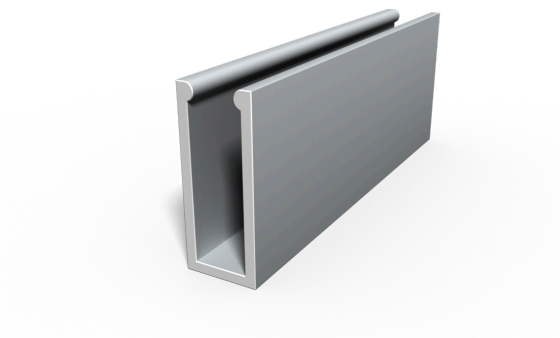
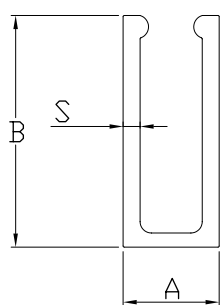
POSTE CERRAMIENTO	A	B	C	D	S	S1/S2	mm <sup>2</sup>	Kg /m
PCE-100	50	107	35	32	8	4,5 / 6	2468,6	4,680
PCE-101	50	100	35	28	5	4,5 / 4,5	1.940	3,686



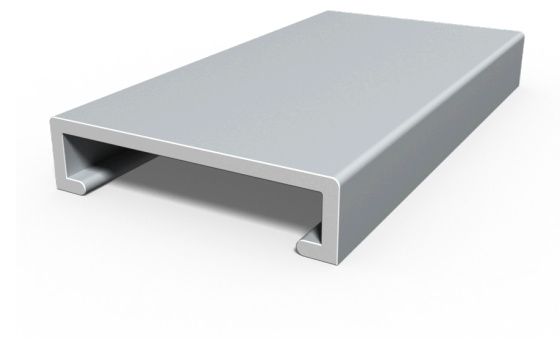
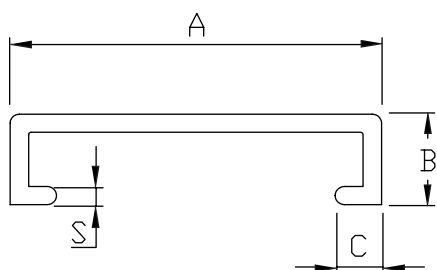
PERFIL REJA	A	B	S	mm <sup>2</sup>	Kg /m
E-1200	25	10	5	181,49	0,345
E-1201	30	10	5	206,49	0,392



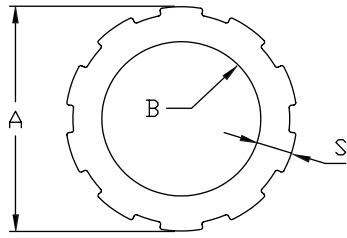
GUÍA ALA	A	B	C	S	mm <sup>2</sup>	Kg /m
E-1100	15	51	30	3	278,84	0,530



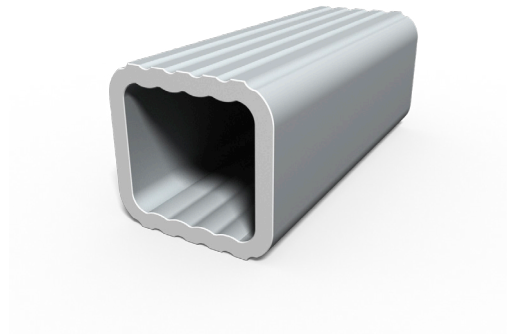
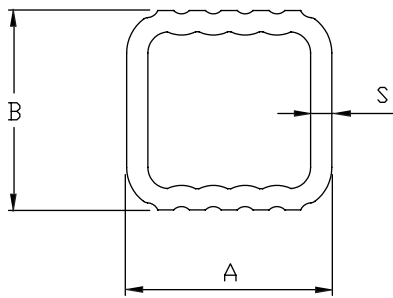
GUÍA VENTANA	A	B	S	mm <sup>2</sup>	Kg /m
E-1000	17	41	3	284,03	0,540



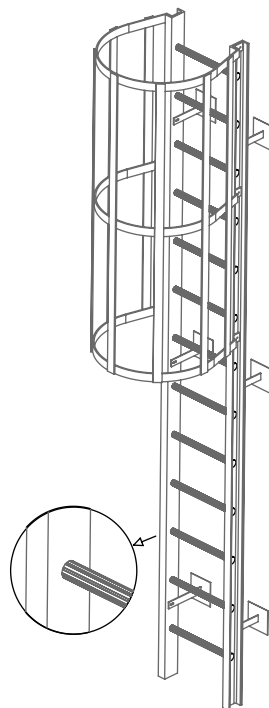
C	A	B	C	S	mm <sup>2</sup>	Kg /m
E-1500	80	20	10	4	490,95	0,933

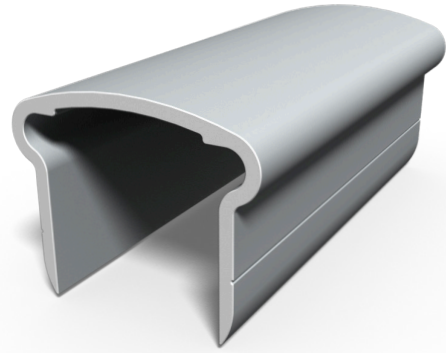
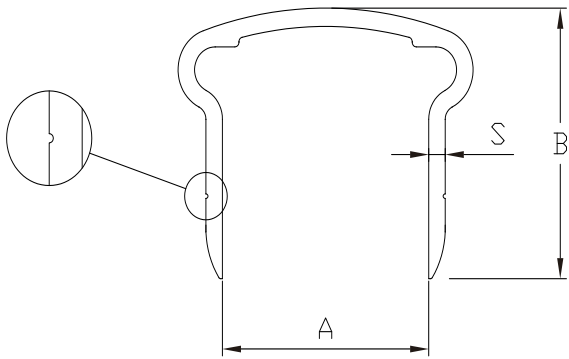


PELDAÑO	A	B	S	mm <sup>2</sup>	Kg /m
E-2000	32	22	4	385,08	0,732

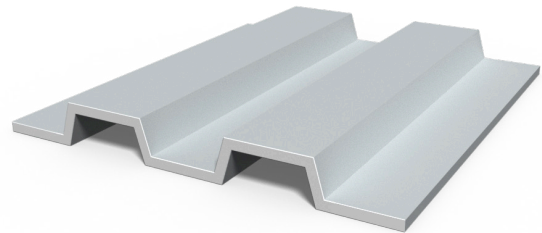
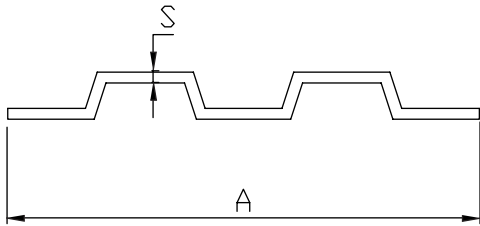


PELDAÑO	A	B	S	mm <sup>2</sup>	Kg /m
E-2001	29	28,2	3	287,46	0,546

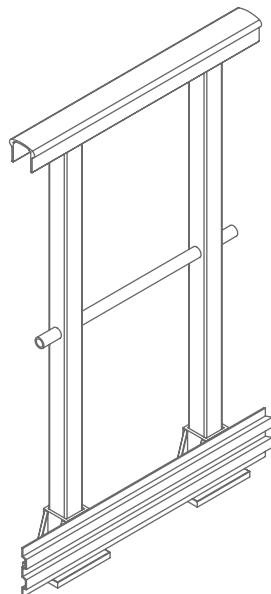




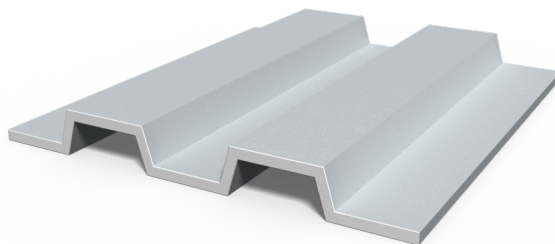
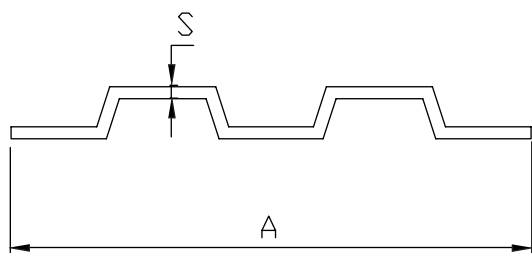
PASAMANO OMEGA	A	B	S	mm <sup>2</sup>	Kg /m
E-2101	50	59	4	680,4	1,293



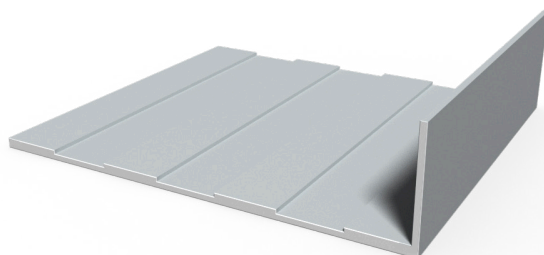
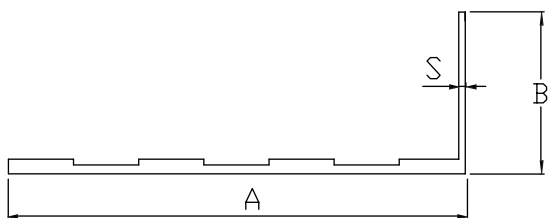
ZÓCALO	A	B	S	mm <sup>2</sup>	Kg /m
RD-104	120	0	3	449,28	0,854



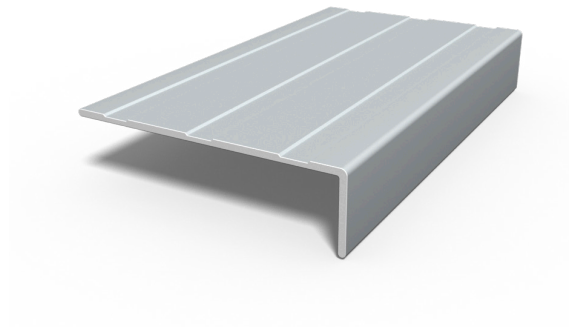
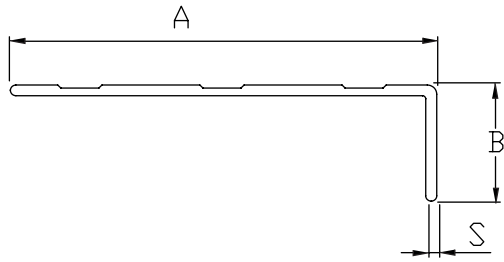




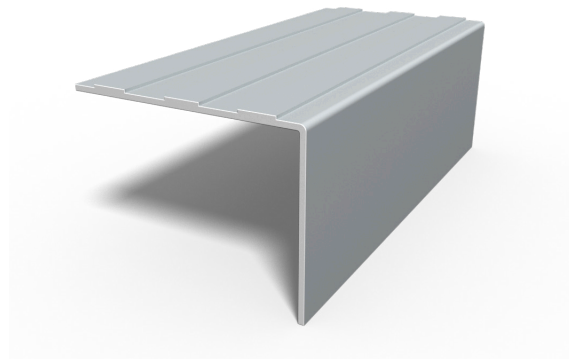
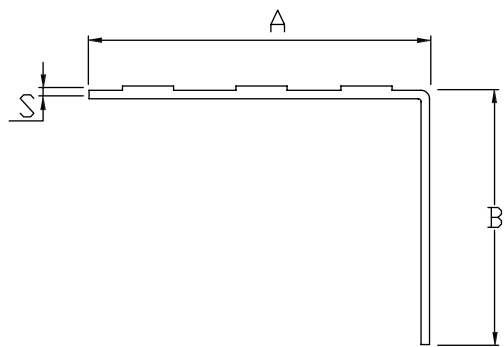
ZÓCALO	A	B	S	mm <sup>2</sup>	Kg /m
RD-104	120	0	3	449,28	0,854



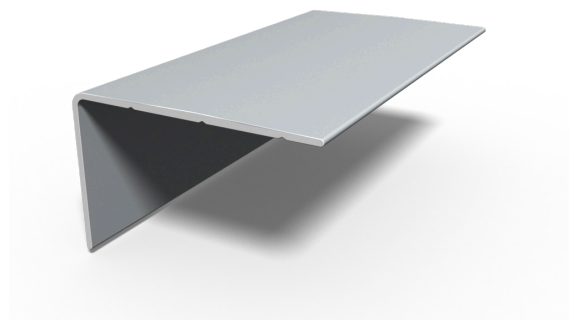
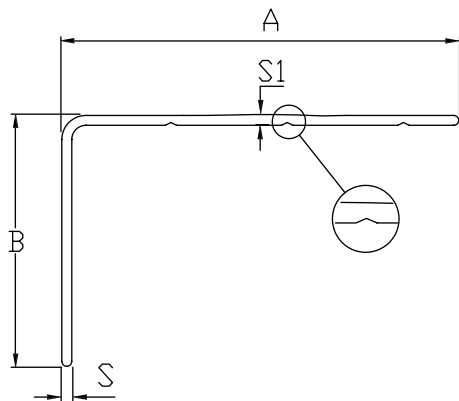
ZÓCALO	A	B	S	mm <sup>2</sup>	Kg /m
RD-100	200	0	3,5	736,80	1,400
RD-103	220	35	3,5	855,36	1,625
RD-101	270	35	3,5	1020,56	1,939
RD-102	270	70	3,8	1153,56	2,192



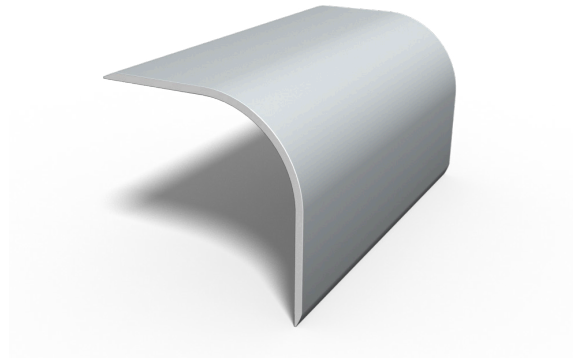
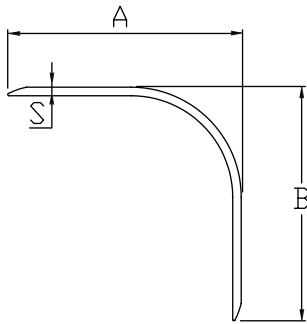
CANTONERA	A	B	S	mm <sup>2</sup>	Kg /m
CA-100	135	38	3,5	549,90	1,045



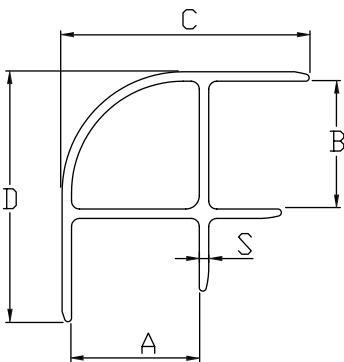
CANTONERA	A	B	S	mm <sup>2</sup>	Kg /m
CA-102	120	90	3	714	1,357



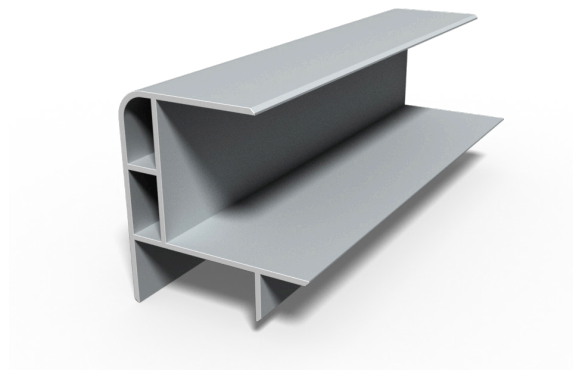
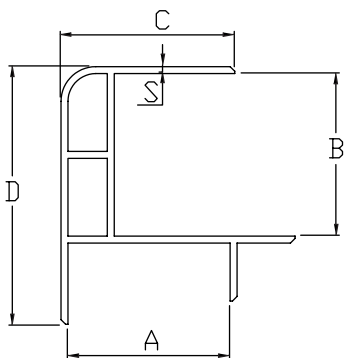
CANTONERA	A	B	S	S1	mm <sup>2</sup>	Kg /m
CA-103	140	89	3,5	4,5	809,25	1,538



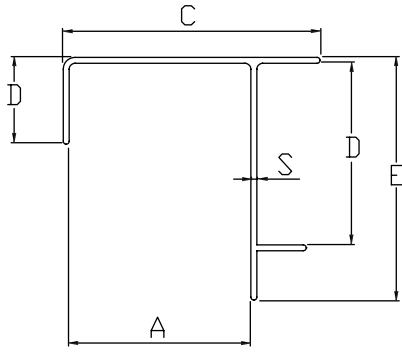
CANTONERA	A	B	S	mm <sup>2</sup>	Kg /m
CA-104	90	90	3,5	532,41	1,012



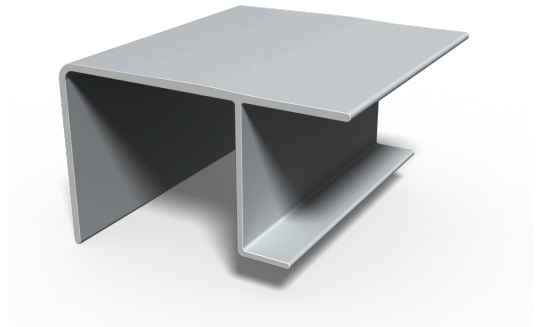
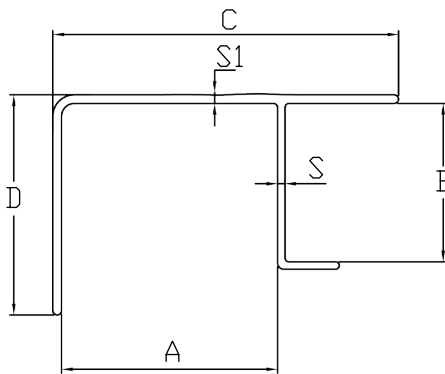
CANTONERA	A	B	C	D	S	mm <sup>2</sup>	Kg /m
CA-113	47	47	90	90	3,5	1.088,71	2,069



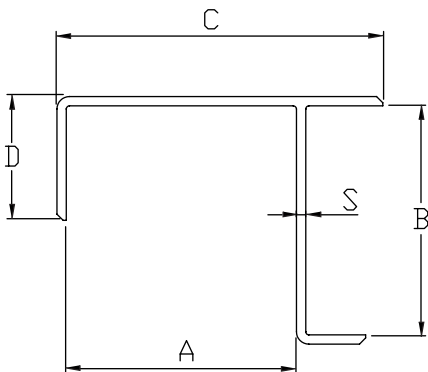
CANTONERA	A	B	C	D	S	mm <sup>2</sup>	Kg /m
CA-111	70	70	75	111	3	1.153,62	2,192
CA-112	90	70	75	131	3	1.273,62	2,420



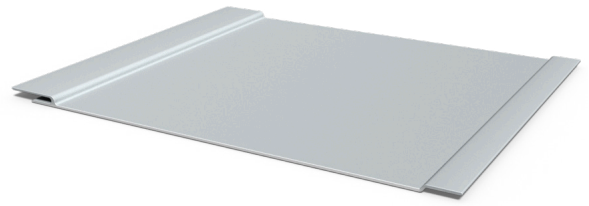
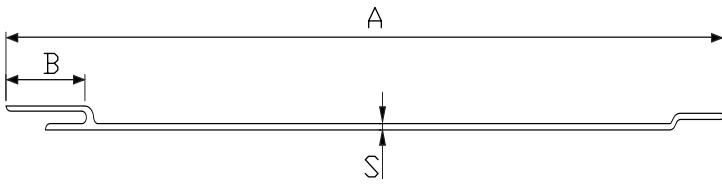
CANTONERA	A	B	C	D	E	S	mm <sup>2</sup>	Kg /m
CA-105	32	32	63	48	63	3	552	1,049
CA-106	72	72	130	44	103	3	875	1,663
CA-108	92	92	130	44	123	3	942,20	1,790



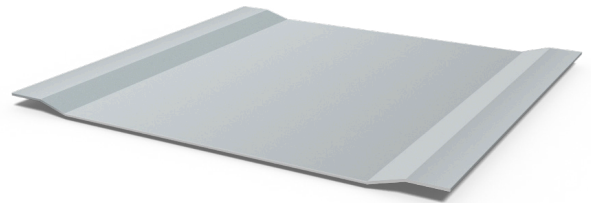
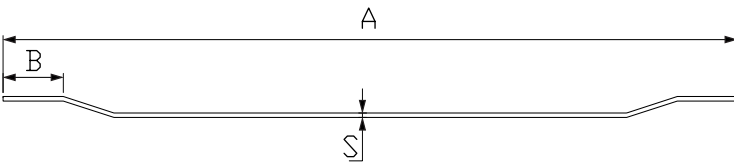
CANTONERA	A	B	C	D	S	S1	mm <sup>2</sup>	Kg /m
CA-107	88	64	140	89	3	4,5	1.079,22	2,051
CA-109	108	64	140	89	3	4,5	1.081,39	2,055



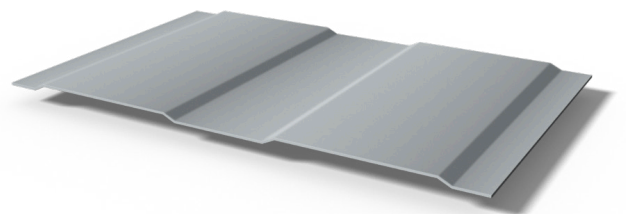
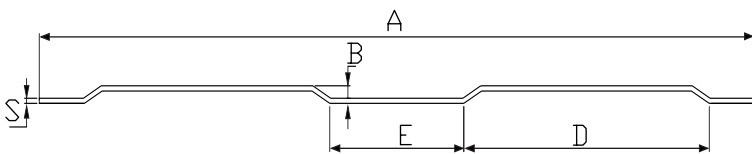
CANTONERA	A	B	C	D	S	mm <sup>2</sup>	Kg /m
CA-110	74	74	105	40	3	702,22	1,334



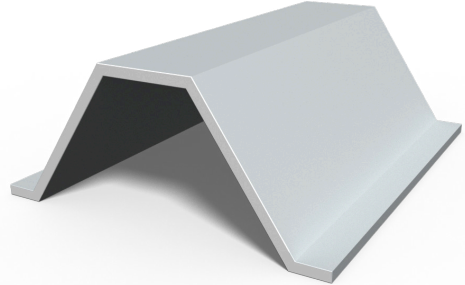
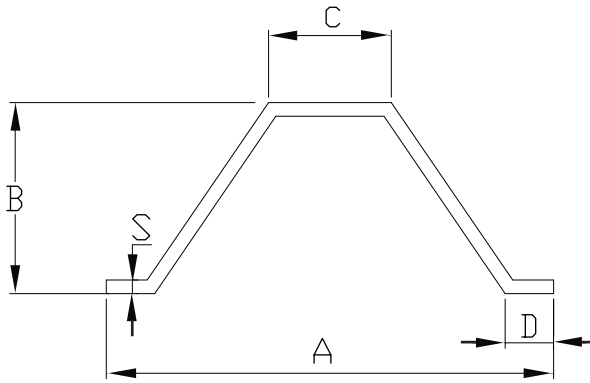
LAMA	A	B	S	mm <sup>2</sup>	Kg /m
LMA-100	490	54	3	1.600	3,040



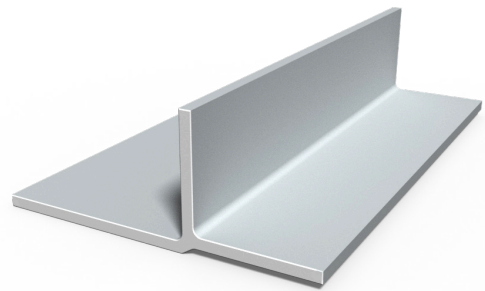
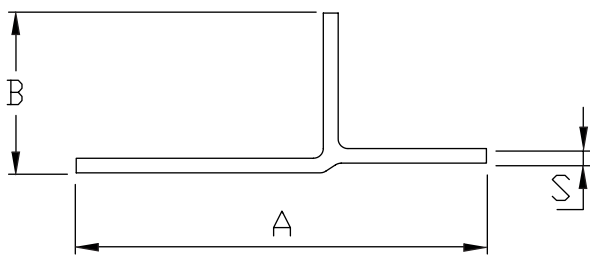
LAMA	A	B	S	mm <sup>2</sup>	Kg /m
LMA-101	487	40	3	1.363,70	2,591



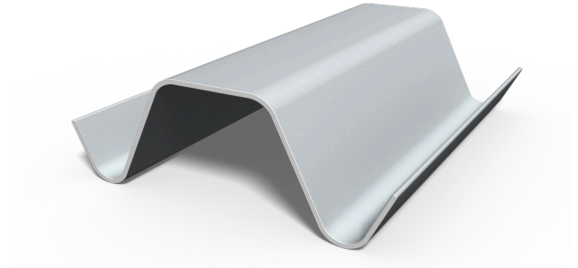
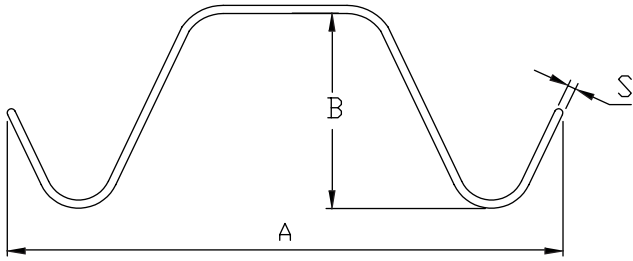
LAMA	A	B	C	D	E	S	mm <sup>2</sup>	Kg /m
LMA-102	800	10	50	275	150	4	3.237,83	6,152



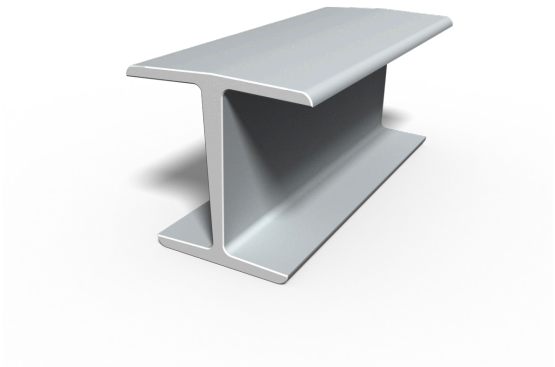
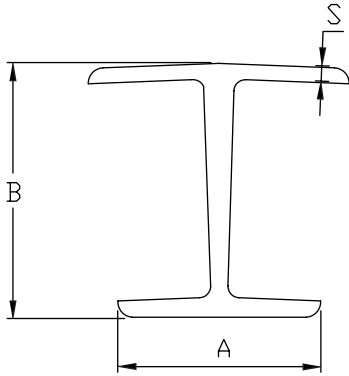
OMEGA	A	B	C	D	S	mm <sup>2</sup>	Kg /m
E-1400	158	70	45	20	5	1.150,70	2,186



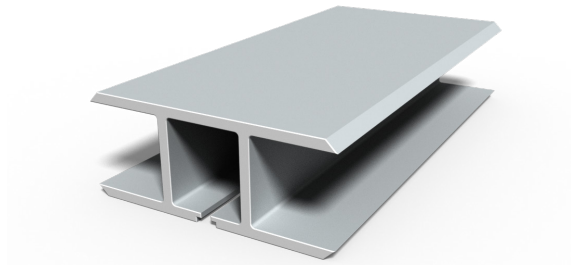
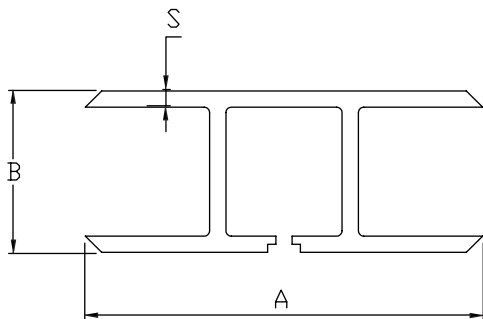
T EMBELLECEDOR	A	B	S	mm <sup>2</sup>	Kg /m
E-1700	83	33	3	337,72	0,642



GUARDACARRIL	A	B	S	mm <sup>2</sup>	Kg /m
GC-100	282	87	3,5	1486,28	2,824



TT INCLINADA	A	B	S	mm <sup>2</sup>	Kg /m
TT-106	58,4	60	3,5	825,76	1,569



TT RAIL	A	B	S	mm <sup>2</sup>	Kg /m
TT rail - 100	73	30	3	552,22	1,049



[www.tecnipul.com](http://www.tecnipul.com)

Crta. de Pedrafita s/n 08281 ELS PRATS DE REI (Barcelona)  
T. +34 93 869 91 33 [tecnipul@tecnipul.com](mailto:tecnipul@tecnipul.com)